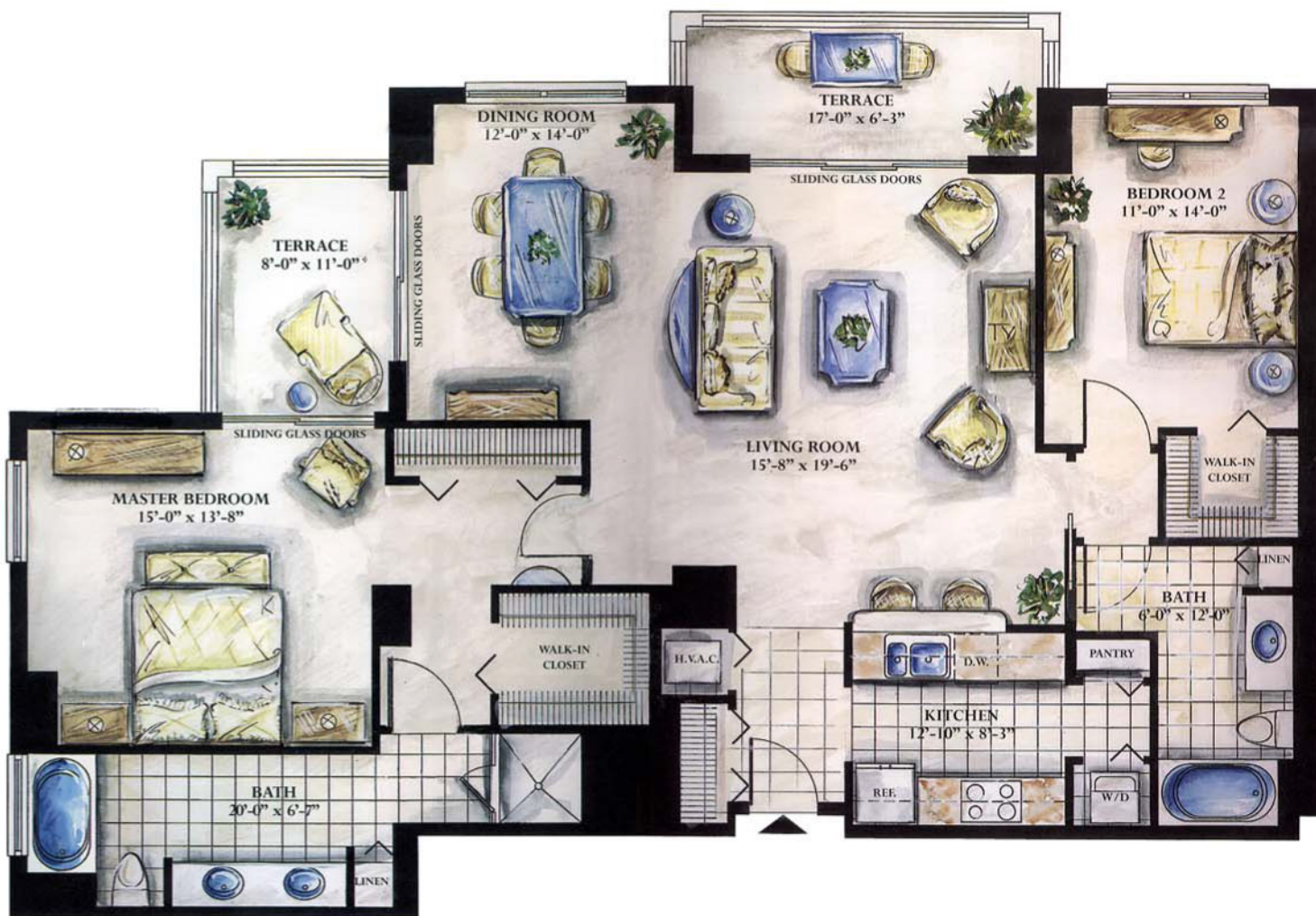


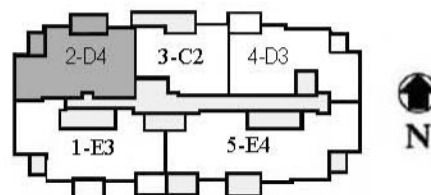


Michael Kimmey PA
 Broker Associate
 Coldwell Banker
 954-563-0105
www.SymphonyFTL.com



*Dolce 4 - South Tower
 Floors 19-22
 2 Bedrooms, 2 Baths*

*Interior: 1590 Sq. Ft.
 Terraces: 190 Sq. Ft.
 Total: 1,780 Sq. Ft.
 (Floor 19 has expanded Terrace)*



All dimensions are approximate. This floor plan is subject to change without notice. The Seller reserves the absolute right, in its sole judgement and discretion to substitute appliances, materials, fixtures and equipment of equal or greater quality or value for those specified. Furnishings are for artistic purposes only; see standard Features and Amenities List for residence features.