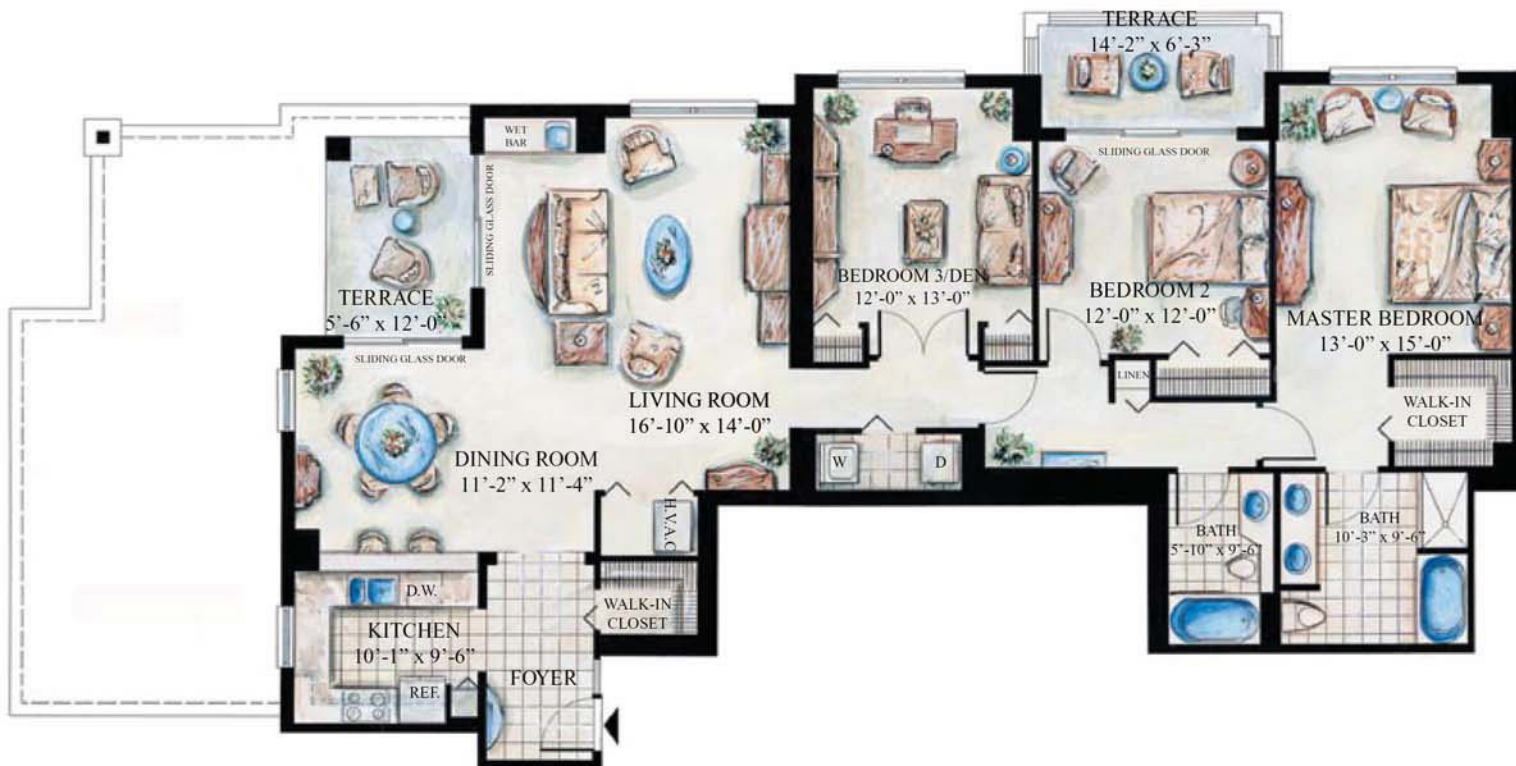




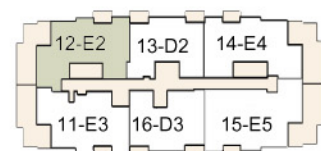
THE SYMPHONY

Michael Kimmey PA
Broker Associate
Coldwell Banker
954-563-0105
www.SymphonyFTL.com



Ensemble 2 - North Tower
Floors 19-21
3 Bedroom 2 Bath

Interior: 1,811 Sq. Ft.
Terrace 173 Sq. Ft.
Total: 1,984 Sq. Ft.



All dimensions are approximate. This floor plan is subject to change without notice. The Seller reserves the absolute right, in its sole judgement and discretion to substitute appliances, materials, fixtures and equipment of equal or greater quality or value for those specified. Furnishings are for artistic purposes only; see standard Features and Amenities List for residence features.